

Ascend

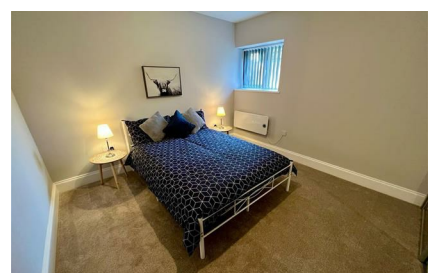
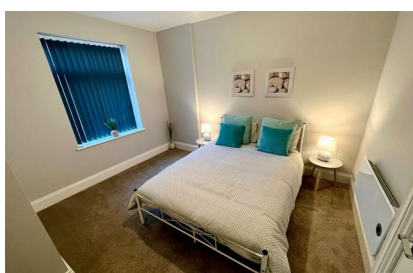
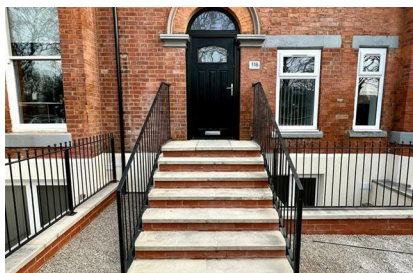
Built on higher standards



11B Ellesmere Road Manchester M30 9HE

- Two double bedrooms
- 4 piece bathroom + WC
- Duplex apartment
- Parking space included
- Stunning period conversion
- Communal garden
- Available furnished or unfurnished
- Private entrance
- Located in the Heart of Ellesmere Park
- Premium finish throughout

£1,290 PCM



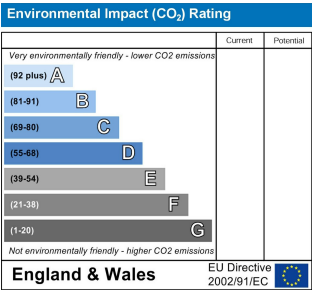
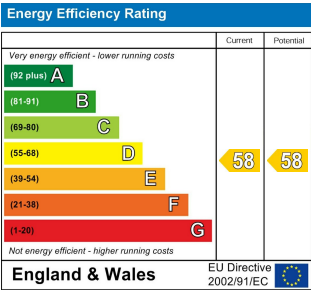
With its own private entrance, this stunning duplex apartment is part of the beautifully renovated Westminster House development in Ellesmere Park. To the ground floor there is a large open plan living area, fully fitted kitchen and WC, whilst to the lower ground there are two double bedrooms, each with fitted wardrobes, and a four piece bathroom suite. One parking space included.

The Prestigious, and well known Westminster House has been standing proudly on the corner of Ellesmere and Westminster Road for over a century and has been recently transformed into elite living of the highest standard! Lovingly renovated, this stunning building has been given a new lease of life and has been converted into 13 prime units for renters to experience Prime property in a Prime location. No stone has been left unturned, and no corner has been cut to produce the perfect balance of modern, stylish, high-end interiors amongst the backdrop of a beautiful period building with all the features you'd come to expect. Think high ceilings, coving, bay window's mixed with contemporary fixtures and fittings.

Set on a large corner plot, Westminster House comprises a Town House, Coach House, three bedroom duplex apartments, a two bed duplex with its own private entrance, one and two bedroom apartments, some of which have their own outside space! This unique building needs to be seen to be appreciated and understood.

The development has been established with fibre optic infrastructure to enable high speed internet access and a communal sky dish should you wish to opt for those at your own cost.

The residents car park can be accessed from both Westminster and Ellesmere Road and each property comes with either one or two parking spaces, and benefits from security and low level night time lighting, and a secure bike store. There are also vehicle charging points to be made available. Alongside this is a beautiful feature communal garden with seating that is tended to by resident gardeners



Ascend

Built on higher standards

0161 707 7584

192 Monton Road, Monton, Manchester, M30 9PY

monton.sales@ascendproperties.com,
monton.lettings@ascendproperties.com
www.ascendproperties.com



These particulars, whilst believed to be accurate are set out as a general outline only for guidance and do not constitute any part of an offer or contract. Intending purchasers should not rely on them as statements of representation of fact, but must satisfy themselves by inspection or otherwise as to their accuracy. No person in this firm's employment has the authority to make or give any representation or warranty in respect of the property

